

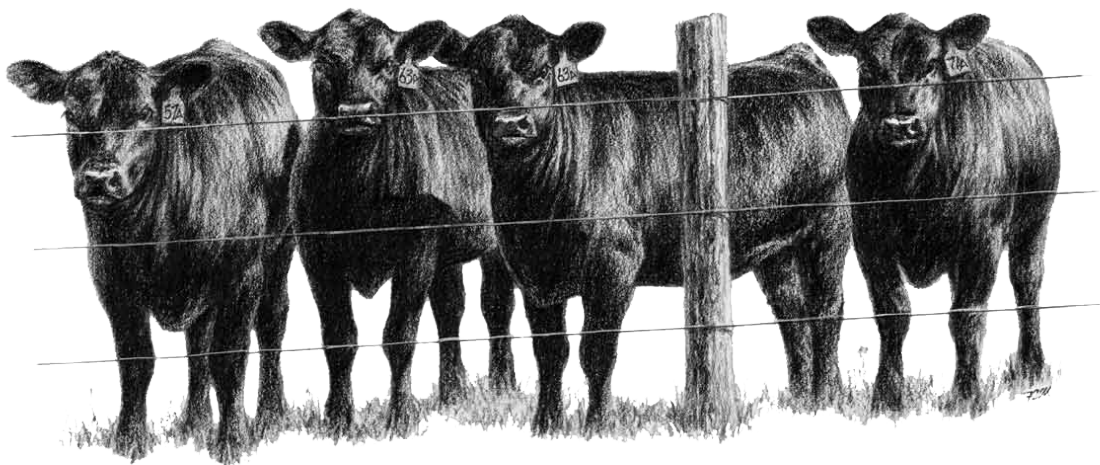
WALTER
Hudson, Colorado



ANGUS

2024

HELPER CATALOG



REGISTERED BRED HEIFERS

These Bred Heifers are out of the heart of the Registered Herd. They were summered in Silverthorne, Colorado (9,000+ Ft.) or Walden, Colorado (9,000+ Ft.). They were recently preg checked safe and were given pre-calving shots.

LOT 140

WXW QUEENIE Z272 B514
#20870477

Mohnen Substantial 272
Sitz Stellar 726D
Sitz Pride 200B
S Powerpoint WS 5503
WXW Queenie X232 Z272
WXW Queenie R280 X232

Months Preg: **8.5**
Birth Date: 12/11/21

ACT. BW: 70
PAP EPD: -1.44 10%

\$M: \$W: \$C
77 69 240
15% 20%

CED	BW	WW	YW	SC	Heifer Preg.	CEM	Milk	Dam Age
+15	-2.0	+67	+114	+53	+15.0	+18	+24	4
2%	4%				20%	1%		% RANK

CW	MB	RE	Fat	\$F	\$G	\$B
+31	+82	+62	+0.016	+66	+61	+126
				35%		

LOT 143

WXW PENELOPE X36 C095
#20823706

Sitz Profile 1160
Sitz Continuity
Sitz Erica Everelda 2007
WXW Uptrend P203B
WXW Penelope X36
WXW CNY Right Answer 096 M73

Months Preg: **8**
Birth Date: 1/12/22

ACT. BW: 74
PAP EPD: +.22 30%

\$M: \$W: \$C
86 65 294
5% 30% 20%

CED	BW	WW	YW	SC	Heifer Preg.	CEM	Milk	Dam Age
+9	+1	+66	+116	+2.59	+18.0	+8	+22	7
30%	25%			1%	4%			% RANK

CW	MB	RE	Fat	\$F	\$G	\$B
+42	+1.21	+48	+0.038	+83	+77	+160
	15%			15%	30%	

LOT 141

WXW JET LADY V36 C029
#20866721

S S Niagara Z29
Tehama Patriarch F028
Tehama Elite Blackbird D826
WXW In The Black 0989 P43
WXW Jet Lady 0975 V36
WXW Jet Lady 755 K92

Months Preg: **8.5**
Birth Date: 1/5/22

ACT. BW: 87
PAP EPD: +.39 35%

\$M: \$W: \$C
68 72 230
15%

CED	BW	WW	YW	SC	Heifer Preg.	CEM	Milk	Dam Age
+9	+2	+73	+124	+54	+18.3	+6	+28	9
30%	30%	25%	30%		3%		35%	% RANK

CW	MB	RE	Fat	\$F	\$G	\$B
+44	+68	+38	+0.041	+77	+49	+125

LOT 144

WXW BLACKBIRD R312 B685
#20823704

Mohnen Substantial 272
Sitz Profile 1160
Sitz Blackbird 334
Sinclair Mountain Pass 4P138
WXW Blackbird N83 R312
WXW Blackbird 503 N83

Months Preg: **8**
Birth Date: 12/31/21

ACT. BW: 72
PAP EPD: +1.49

\$M: \$W: \$C
73 67 244
25% 25%

CED	BW	WW	YW	SC	Heifer Preg.	CEM	Milk	Dam Age
+10	-1.5	+56	+102	+1.19	+12.1	+12	+33	9
20%	10%			30%		15%	10%	% RANK

CW	MB	RE	Fat	\$F	\$G	\$B
+36	+94	+24	+0.053	+73	+59	+132
	30%				35%	

LOT 142

WXW PRIDE JULE X360 B662
#20823702

BUBS Southern Charm AA31
WXW Southern Charm Y362
WXW Velvet N25 R258
Sitz Investment 660Z
WXW Pride Jule P223B X360
WXW Pride Jule 2215 P223B

Months Preg: **8.5**
Birth Date: 12/24/21

ACT. BW: 85
PAP EPD: +.41 35%

\$M: \$W: \$C
61 64 265
35%

CED	BW	WW	YW	SC	Heifer Preg.	CEM	Milk	Dam Age
-6	+3.4	+76	+126	+1.30	+13.5	+1	+21	6
	15%	25%	25%		35%			% RANK

CW	MB	RE	Fat	\$F	\$G	\$B
+56	+72	+69	+0.021	+101	+56	+157
				25%	35%	

LOT 145

WXW SAMANTHA Y209 C063
#20845158

GDAR Leupold 298
RAML Rangefinder 7536
RAML Royce 536
S S Niagara Z29
WXW Samantha R217 Y209
WXW Samantha N97 R217

Months Preg: **8**
Birth Date: 1/9/22

ACT. BW: 89
PAP EPD: +2.99

\$M: \$W: \$C
64 57 268
35%

CED	BW	WW	YW	SC	Heifer Preg.	CEM	Milk	Dam Age
+3	+1.7	+72	+128	+1.92	+11.9	+14	+18	5
		25%	25%	4%		5%		% RANK

CW	MB	RE	Fat	\$F	\$G	\$B
+60	+50	+83	-0.12	+107	+50	+157
	30%		30%	25%	15%	35%

REGISTERED YEARLING OPEN HEIFERS

Selling Choice of Each Group

LOT 147

WXW CONNECTION Z011 C533

Group 1

#20848840

Birth Date: 12/16/22

Connealy Regulator
WXW Timberline W287

WXW Miss Wix Lass 063A8 N14

ANGUS GS
Powered by Neogen Genesick

WXW In The Black 1526 V331

WXW Connection X19 Z011

WXW Connection X19

ACT. BW: 55
PAP EPD: -1.70 5%

\$M:	\$W:	\$C
76	58	256
20%		

CED	BW	WW	YW	SC	Heifer Preg.	CEM	Milk	Dam Age
+15	-2.6	+49	+85	+4.4	+13.1	+15	+27	5
2%	2%					3%		% RANK

CW	MB	RE	Fat	\$F	\$G	\$B
+30	+90	+50	-.013	+73	+66	+139
35%		20%		25%		

LOT 151

WXW ZARA LASS Y335 F269

Group 2

#20848820

Birth Date: 2/27/23

WXW Timberline W287
WXW High Line A636

WXW Queenie R219 X228

ANGUS GS
Powered by Neogen Genesick

Poss Achievement

WXW Zara Lass V304 Y335

WXW Zara Lass P25 V304

ACT. BW: 64
PAP EPD: +.08 25%

\$M:	\$W:	\$C
51	64	281
	35%	25%

CED	BW	WW	YW	SC	Heifer Preg.	CEM	Milk	Dam Age
+10	+7	+73	+132	+9.5	+11.2	+7	+22	5
20%		25%	20%					% RANK

CW	MB	RE	Fat	\$F	\$G	\$B
+58	+98	+1.03	-.021	+99	+78	+177
35%	25%	10%	15%	30%	15%	20%

LOT 148

WXW BLACKBIRD A022 C609

Group 1

#20879220

Birth Date: 12/28/22

Circle L Gus
Circle L Landmark

Circle L Queen 307B

ANGUS GS
Powered by Neogen Genesick

WXW Black Gambit X359

WXW Blackbird P104 A022

WXW Blackbird 0950 P104

ACT. BW: 75
PAP EPD: -1.83 4%

\$M:	\$W:	\$C
92	69	285
2%	20%	25%

CED	BW	WW	YW	SC	Heifer Preg.	CEM	Milk	Dam Age
+7	+1.5	+73	+119	+1.22	+14.0	+18	+17	4
	25%	35%	30%	30%		1%		% RANK

CW	MB	RE	Fat	\$F	\$G	\$B
+57	+63	+60	+0.030	+99	+50	+149
35%				30%		

LOT 152

WXW PRIDE JULE W303 F265

Group 2

#20848819

Birth Date: 2/28/23

WXW Timberline W287
WXW Timberline Z332

WXW Zara Lass 305 J154

ANGUS GS
Powered by Neogen Genesick

K C F Bennett Southside

WXW Julie Pride W303

WXW Julie Pride 158 L58

ACT. BW: 60
PAP EPD: +1.20

\$M:	\$W:	\$C
63	57	239

CED	BW	WW	YW	SC	Heifer Preg.	CEM	Milk	Dam Age
+13	+2	+62	+108	+5.8	+14.2	+14	+21	7
10%	30%				25%	5%		% RANK

CW	MB	RE	Fat	\$F	\$G	\$B
+46	+56	+44	-.005	+89	+47	+136
			30%			

LOT 149

WXW MISS PRIMROSE V295 F008

Group 1

#20869856

Birth Date: 1/2/23

Ellingson Three Rivers 8062
Ellingson Deep River

EA Primrose 5083

ANGUS GS
Powered by Neogen Genesick

WXW In The Black 0989 P43

WXW Miss Primrose 858 V295

WXW Miss Primrose 853 J134

ACT. BW: 76
PAP EPD: +2.20

\$M:	\$W:	\$C
44	48	214

CED	BW	WW	YW	SC	Heifer Preg.	CEM	Milk	Dam Age
+5	+1.7	+59	+113	+2.4	+9.2	+11	+21	8
						25%		% RANK

CW	MB	RE	Fat	\$F	\$G	\$B
+41	+49	+29	+0.006	+90	+40	+131

LOT 153

WXW QUEENIE A694 C539

Group 2

#20870757

Birth Date: 12/15/22

Vermilion Spur E119
Heiken Broadview

JCH BHA Karen 7815

ANGUS GS
Powered by Neogen Genesick

KJ Justified 3023

WXW Queenie L64 A694

WXW Queenie 42F8 L64

ACT. BW: 70
PAP EPD: -.43 20%

\$M:	\$W:	\$C
52	50	217

CED	BW	WW	YW	SC	Heifer Preg.	CEM	Milk	Dam Age
+16	-3.6	+51	+86	+1.87	+12.1	+11	+18	3
2%	1%			5%		25%		% RANK

CW	MB	RE	Fat	\$F	\$G	\$B
+17	+1.06	+42	+0.042	+59	+68	+127
	20%				25%	

LOT 150

WXW JUANA ERICA A580 F223

Group 1

#20848809

Birth Date: 2/17/23

MGR Treasure
WXW Treasure Z420

WXW Zara Lass 013 P87

ANGUS GS
Powered by Neogen Genesick

WXW Cavalry X317

WXW Juana Erica Y266 A580

WXW Juana Erica W23 Y266

ACT. BW: 60
PAP EPD: -.85 15%

\$M:	\$W:	\$C
58	55	251
%	%	25%

CED	BW	WW	YW	SC	Heifer Preg.	CEM	Milk	Dam Age
+17	-2.6	+56	+116	+1.04	+11.2	+18	+27	3
1%	2%					1%		% RANK

CW	MB	RE	Fat	\$F	\$G	\$B
+36	+99	+53	+0.012	+81	+69	+149
	25%				25%	

LOT 154

WXW CASSIDEE W202 C569

Group 2

#20866771

Birth Date: 12/23/22

S A V Quarterback 7933
Kraye Big Country 0179

Miss Burgess JK 772

ANGUS GS
Powered by Neogen Genesick

Connealy Impression

WXW Cassidee W202

WXW Cassidee P15 V39

ACT. BW: 68
PAP EPD: -1.10 10%

\$M:	\$W:	\$C
71	75	224
30%	10%	

CED	BW	WW	YW	SC	Heifer Preg.	CEM	Milk	Dam Age
+1	+3.6	+78	+131	+1.62	+16.3	+5	+35	7
	15%	20%	10%	10%		10%		% RANK

CW	MB	RE	Fat	\$F	\$G	\$B
+58	+11	+74	+0.040	+93	+24	+118
35%						

REGISTERED OPEN YEARLING HEIFERS CONTINUED

LOT 155

WXW EMULATION LASS Z381 F010 Group 3

#20870759 Birth Date: 1/2/23

Connealy Regulator

WXW Timberline W287

WXW Miss Wix Lass 063A8 N14

ANGUSGS

Sitz Stellar 726D

WXW Emulation Lass R293 Z381

WXW Emulation Lass 836 R293

ACT. BW: 72
PAP EPD: +1.39 10%
\$M: \$W: \$C
40 53 232

CED	BW	WW	YW	SC	Heifer Preg.	CEM	Milk	Dam Age
+5	+7	+63	+115	+1.05	+7.0	+9	+19	4

% RANK

CW	MB	RE	Fat	\$F	\$G	\$B
+40	+65	+92	-0.18	+89	+59	+148
	20%	20%		35%		

LOT 159

WXW QUEENIE W253 F146 Group 4

#20848801 Birth Date: 1/13/23

WXW Brinks A190

WXW Brinks A190

WXW TC Blackbird 0951 M65

ANGUSGS

Basin Payweight 1682

WXW Queenie W253

WXW Queenie 0428 R115

ACT. BW: 52
PAP EPD: +.47 35%
\$M: \$W: \$C
70 81 266
35% 4% 35%

CED	BW	WW	YW	SC	Heifer Preg.	CEM	Milk	Dam Age
+9	-.1	+85	+146	+1.52	+15.3	+7	+26	7

% RANK

CW	MB	RE	Fat	\$F	\$G	\$B
+78	+30	+55	+0.059	+122	+30	+151
	5%			4%		

LOT 156

WXW QUEENIE R115 C579 Group 3

#20870893 Birth Date: 12/24/22

Connealy Spur

Vermilion Spur E119

Vermilion Lass 4071

ANGUSGS

WXW Sitz JLS Fwd 236 M236

WXW Queenie 0428 R115

WXW Saf Queenie 428 L142

ACT. BW: 65
PAP EPD: +1.29
\$M: \$W: \$C
105 77 266
1% 10% 35%

CED	BW	WW	YW	SC	Heifer Preg.	CEM	Milk	Dam Age
+15	-2.2	+63	+101	+1.51	+22.1	+16	+32	10

% RANK

CW	MB	RE	Fat	\$F	\$G	\$B
+47	+33	+55	+0.043	+92	+33	+124

LOT 160

WXW SUE LASS Z012 F021 Group 4

#20865506 Birth Date: 1/13/23

Circle L Gus

Circle L Landmark

Circle L Queen 307B

ANGUSGS

Tehama Tahoe B767

WXW Sue Lass N105 Z012

WXW Sue Lass 0646 N105

ACT. BW: 73
PAP EPD: +.79
\$M: \$W: \$C
92 72 239
2% 15%

CED	BW	WW	YW	SC	Heifer Preg.	CEM	Milk	Dam Age
+8	+2	+56	+97	+1.09	+16.2	+11	+36	5

% RANK

CW	MB	RE	Fat	\$F	\$G	\$B
+32	+64	+34	+0.048	+68	+45	+113

LOT 157

WXW QUEENIE X328 F069 Group 3

#20848789 Birth Date: 1/6/23

Connealy Regulator

WXW Timberline W287

WXW Miss Wix Lass 063A8 N14

ANGUSGS

3F Epic 4631

WXW Queenie R70 X328

WXW Queenie 142D8 R70

ACT. BW: 78
PAP EPD: -1.65 5%
\$M: \$W: \$C
55 63 266
35% 35%

CED	BW	WW	YW	SC	Heifer Preg.	CEM	Milk	Dam Age
+12	+2	+57	+103	+1.17	+10.0	+12	+32	6

% RANK

CW	MB	RE	Fat	\$F	\$G	\$B
+51	+94	+73	+0.052	+97	+66	+163
	30%			30%	25%	30%

LOT 161

WXW PRIDE JULE V348 F240 Group 4

#20848815 Birth Date: 2/22/23

WXW Timberline W287

WXW Streamline Z281

WXW Blackbird W15 X237

ANGUSGS

Cherry Crk Broken Bow 3302 S

WXW Pride Jule P223B V348

WXW Pride Jule 2215 P223B

ACT. BW: 86
PAP EPD: +.17 30%
\$M: \$W: \$C
60 66 238
30%

CED	BW	WW	YW	SC	Heifer Preg.	CEM	Milk	Dam Age
+10	+7	+64	+121	+1.64	+16.4	+7	+37	8

% RANK

CW	MB	RE	Fat	\$F	\$G	\$B
+46	+61	+84	-0.013	+81	+56	+137
	30%		20%			

LOT 158

WXW QUEENIE Z367 F041 Group 3

#20870760 Birth Date: 1/8/23

Connealy Regulator

WXW Timberline W287

WXW Miss Wix Lass 063A8 N14

ANGUSGS

Sitz Stellar 726D

WXW Queenie X258 Z367

WXW Queenie R221 X258

ACT. BW: 74
PAP EPD: -.64 15%
\$M: \$W: \$C
71 66 253
30% 30%

CED	BW	WW	YW	SC	Heifer Preg.	CEM	Milk	Dam Age
+10	+2	+78	+140	+1.28	+14.7	+15	+17	4

% RANK

CW	MB	RE	Fat	\$F	\$G	\$B
+52	+55	+57	+0.004	+92	+47	+140

LOT 162

WXW QUEENIE Z057 F235 Group 4

#20848813 Birth Date: 2/12/23

WXW Brinks A190

WXW Brinks A190

WXW TC Blackbird 0951 M65

ANGUSGS

WXW In The Black 1526 V331

WXW Queenie W234 Z057

WXW Queenie W234

ACT. BW: 80
PAP EPD: +.47 35%
\$M: \$W: \$C
65 65 232
30%

CED	BW	WW	YW	SC	Heifer Preg.	CEM	Milk	Dam Age
+12	-.5	+61	+107	+0.96	+9.9	+13	+27	5

% RANK

CW	MB	RE	Fat	\$F	\$G	\$B
+43	+45	+71	+0.007	+85	+44	+129

REGISTERED OPEN YEARLING HEIFERS CONTINUED

LOT 163

WXW ZARA LASS X225 C647

Group 5

#20866795

Birth Date: 12/28/22

Sitz Accomplishment 720F
Sitz Reward 12220

ACT. BW: 65
PAP EPD: -3.53 1%

ANGUSGS
Powered by Neogen Genesick

Sitz Elsiemere 2188

Connealy Regulator

WXW Zara Lass N133 X225

WXW Zara Lass 58 N133

SM:	SW:	SC
61	65	237
	30%	

CED	BW	WW	YW	SC	Heifer Preg.	CEM	Milk	Dam Age
+11	-.8	+73	+133	+2.12	+17.6	+8	+23	6
15%	15%	25%	20%	2%	5%			% RANK

CW	MB	RE	Fat	\$F	\$G	\$B
+52	+4.45	+4.46	+0.035	+98	+38	+136
			30%			

LOT 167

WXW JET LADY A562 C529

Group 6

#20848839

Birth Date: 12/15/22

Connealy Regulator
WXW Timberline W287

ACT. BW: 57
PAP EPD: -2.14 3%

ANGUSGS
Powered by Neogen Genesick

WXW Miss Wix Lass 063A8 N14

WXW Black Gambit X359

WXW Jet Lady V258 A562

WXW Jet Lady P80 V258

SM:	SW:	SC
62	53	251

CED	BW	WW	YW	SC	Heifer Preg.	CEM	Milk	Dam Age
+11	-.6	+50	+92	+1.30	+13.4	+9	+28	3
15%	15%			25%	35%		35%	% RANK

CW	MB	RE	Fat	\$F	\$G	\$B
+53	+3.2	+1.00	-.011	+103	+43	+146
			15%	25%	20%	

LOT 164

WXW L BAR L ZARA W257 F274

Group 5

#20876861

Birth Date: 3/1/23

Connealy Regulator
WXW Timberline W287

ACT. BW: 55
PAP EPD: -.78 15%

ANGUSGS
Powered by Neogen Genesick

WXW Miss Wix Lass 063A8 N14

Quaker Hill Rampage 0A36

WXW L Bar L Zara W257

WXW L Bar L Zara 355 P82

SM:	SW:	SC
65	60	238

CED	BW	WW	YW	SC	Heifer Preg.	CEM	Milk	Dam Age
+17	-1.7	+63	+97	-.01	+16.1	+10	+16	7
1%	5%			15%	35%			% RANK

CW	MB	RE	Fat	\$F	\$G	\$B
+46	+3.38	+1.02	-.016	+86	+46	+133
		10%	20%			

LOT 168

WXW ROSENA N163 F273

Group 6

#20848833

Birth Date: 2/20/23

MGR Treasure
WXW Treasure Z420

ACT. BW: 63
PAP EPD: -2.34 2%

ANGUSGS
Powered by Neogen Genesick

WXW Zara Lass 013 P87

WXW Mytty In Focus 22 H25E

WXW Rosena 416 N163

WXW Rosena 412 G44

SM:	SW:	SC
55	46	235

CED	BW	WW	YW	SC	Heifer Preg.	CEM	Milk	Dam Age
+10	-1.0	+46	+90	+.88	+9.3	+12	+24	12
20%	10%				15%			% RANK

CW	MB	RE	Fat	\$F	\$G	\$B
+38	+3.85	+2.1	+0.034	+84	+56	+139

LOT 165

WXW ZARA LASS A526 F190

Group 5

#20876176

Birth Date: 1/30/23

MGR Treasure
WXW Treasure Z420

ACT. BW: 75
PAP EPD: +2.32

ANGUSGS
Powered by Neogen Genesick

WXW Zara Lass 013 P87

RAML Rangefinder 7536

WXW Zara Lass Y367 A526

WXW Zara Lass P25 Y367

SM:	SW:	SC
80	64	275
10%	35%	30%

CED	BW	WW	YW	SC	Heifer Preg.	CEM	Milk	Dam Age
+12	-1.4	+59	+102	+.60	+10.7	+12	+25	3
10%	10%				15%			% RANK

CW	MB	RE	Fat	\$F	\$G	\$B
+32	+1.09	+4.7	+0.000	+76	+74	+150
	20%		35%		20%	

LOT 169

WXW ZARA LASS P25 F177

Group 6

#20848832

Birth Date: 1/28/23

Poss Achievement
WXW Achievement Z033

ACT. BW: 60
PAP EPD: +.70

ANGUSGS
Powered by Neogen Genesick

WXW Queen Ida 908 N76

GDAR Game Day 449

WXW Zara Lass 158 P25

WXW Zara Lass 58 M192

SM:	SW:	SC
54	62	217

CED	BW	WW	YW	SC	Heifer Preg.	CEM	Milk	Dam Age
+16	-.9	+63	+115	+.65	+10.6	+13	+25	11
2%	15%				10%			% RANK

CW	MB	RE	Fat	\$F	\$G	\$B
+40	+3.71	+4.6	+0.004	+72	+55	+126

LOT 166

WXW BLACKBIRD Y411 F094

Group 5

#20848793

Birth Date: 1/13/23

Sitz Logo 12964
Sitz Legacy 11508

ACT. BW: 75
PAP EPD: +.59 35%

ANGUSGS
Powered by Neogen Genesick

Sitz Elsiemere 2376

Connealy Hard Rock 6621

WXW Blackbird W33 Y411

WXW Blackbird 55 W33

SM:	SW:	SC
93	67	260
2%	25%	

CED	BW	WW	YW	SC	Heifer Preg.	CEM	Milk	Dam Age
+9	+0	+59	+96	+1.07	+20.0	+10	+29	5
30%	25%				1%	35%	30%	% RANK

CW	MB	RE	Fat	\$F	\$G	\$B
+34	+3.72	+3.38	+0.018	+77	+52	+129

LOT 170

WXW PRIDE JULE X360 F042

Group 6

#20879359

Birth Date: 1/8/23

Basin Deposit 6249
Basin Safe Deposit 9324

ACT. BW: 77
PAP EPD: +3.87

ANGUSGS
Powered by Neogen Genesick

Basin Lucy 4288

WXW Sitz Investment 660Z

WXW Pride Jule P223B X360

WXW Pride Jule 2215 P223B

SM:	SW:	SC
77	70	305
15%	20%	15%

CED	BW	WW	YW	SC	Heifer Preg.	CEM	Milk	Dam Age
+0	+2.7	+75	+133	+1.71	+14.9	+3	+30	6
		20%	20%	10%	20%		25%	% RANK

CW	MB	RE	Fat	\$F	\$G	\$B
+60	+1.15	+2.28	+0.035	+104	+72	+176
	30%	15%		20%	20%	

REGISTERED OPEN YEARLING HEIFERS CONTINUED

LOT 171

WXW JET LADY A538 F205 Group 7
#20848806 Birth Date: 2/5/23

MGR Treasure
WXW Treasure Z420
WXW Zara Lass 013 P87
ANGUSGS WXW Timberline W287
WXW Jet Lady Y208 A538
WXW Jet Lady X84 Y208

ACT. BW: 54
PAP EPD: -.02 25%
SM: SW: SC
49 59 210

CED	BW	WW	YW	SC	Heifer Preg.	CEM	Milk	Dam Age
+12	-1.7	+56	+107	+1.42	+11.0	+13	+29	3
10%	5%			20%		10%	30%	% RANK

CW	MB	RE	Fat	\$F	\$G	\$B
+32	+7.3	+2.5	-.014	+71	+55	+124
			20%			

LOT 175

WXW JULIE PRIDE X308 F130 Group 8
#20866766 Birth Date: 1/22/23

Basin Payweight 1682
WXW Brinks V282
WXW Queenie 142D8 P91
ANGUSGS Rock Creek Rancher 1495
WXW Julie Pride N100 X308
WXW Julie Pride 0158 N100

ACT. BW: 62
PAP EPD: +1.77
SM: SW: SC
75 59 240

CED	BW	WW	YW	SC	Heifer Preg.	CEM	Milk	Dam Age
+13	-1.4	+53	+97	+4.49	+14.6	+13	+26	6
10%	10%			25%	10%			% RANK

CW	MB	RE	Fat	\$F	\$G	\$B
+34	+6.6	+3.0	+0.044	+81	+46	+127

LOT 172

WXW SAMANTHA X286 F308 Group 7
#20848829 Birth Date: 3/27/23

Basin Payweight 1682
WXW Brinks V282
WXW Queenie 142D8 P91
ANGUSGS Connealy Commonwealth
WXW Samantha P67 X286
WXW Samantha 0445 P67

ACT. BW: 79
PAP EPD: +2.69
SM: SW: SC
79 71 285

CED	BW	WW	YW	SC	Heifer Preg.	CEM	Milk	Dam Age
+14	+1	+66	+113	+1.93	+15.8	+12	+30	6
4%	25%			4%	15%	15%	25%	% RANK

CW	MB	RE	Fat	\$F	\$G	\$B
+62	+6.7	+5.4	+0.046	+109	+55	+159
			15%		35%	

LOT 176

WXW JULIE PRIDE X342 F268 (NHC) Group 8
#20875559 Birth Date: 2/28/23

WXW Timberline W287
WXW Timberline Z332
WXW Zara Lass 305 J154
ANGUSGS 3F Epic 4631
WXW Julie Pride P139 X342
WXW Julie Pride 575 P139

ACT. BW: 72
PAP EPD: +1.53
SM: SW: SC
42 52 251

CED	BW	WW	YW	SC	Heifer Preg.	CEM	Milk	Dam Age
+11	+2	+64	+118	+0.1	+14.7	+5	+18	6
15%	30%			20%				% RANK

CW	MB	RE	Fat	\$F	\$G	\$B
+55	+7.6	+7.2	+0.022	+103	+59	+161
			20%	35%	30%	

LOT 173

WXW FOXIE QUEENIE A020 C551 Group 7
#20848843 Birth Date: 12/19/22

SydGen Blueprint
S Architect 9501
S Blossom 7514
ANGUSGS Sitz Stellar 726D
WXW Fokie Queenie W315 A020
WXW Fokie Queenie W315

ACT. BW: 63
PAP EPD: +1.12
SM: SW: SC
83 78 271

CED	BW	WW	YW	SC	Heifer Preg.	CEM	Milk	Dam Age
+14	-2.2	+68	+121	+1.26	+14.7	+16	+37	4
4%	3%	35%	35%	25%	20%	1%	3%	% RANK

CW	MB	RE	Fat	\$F	\$G	\$B
+58	+5.4	+8.3	-.007	+94	+51	+145
		30%	30%	35%		

LOT 177

WXW QUEENIE A547 F289 Group 8
#20848826 Birth Date: 3/14/23

MGR Treasure
WXW Treasure Z420
WXW Zara Lass 013 P87
ANGUSGS WXW Cavalry X317
WXW Queenie Y269 A547
WXW Pltmre Queenie 0424 Y269

ACT. BW: 75
PAP EPD: +4.17
SM: SW: SC
48 57 209

CED	BW	WW	YW	SC	Heifer Preg.	CEM	Milk	Dam Age
+5	+2.3	+78	+142	+1.91	+8.1	+10	+16	3
		15%	10%	4%		35%		% RANK

CW	MB	RE	Fat	\$F	\$G	\$B
+42	+6.5	+3.6	-.001	+73	+55	+124
			35%			

LOT 174

WXW ROSENA Y254 F001 Group 7
#20865505 Birth Date: 1/1/23

Circle L Gus
Circle L Landmark
Circle L Queen 307B
ANGUSGS Three Trees Xceptional B0048
WXW Rosena W323 Y254
WXW Rosena W323

ACT. BW: 78
PAP EPD: +.54 35%
SM: SW: SC
90 81 283

CED	BW	WW	YW	SC	Heifer Preg.	CEM	Milk	Dam Age
+3	+2.9	+82	+140	+7.3	+15.4	+12	+32	5
	10%	10%			15%	15%	15%	% RANK

CW	MB	RE	Fat	\$F	\$G	\$B
+65	+6.1	+6.1	+0.019	+99	+50	+149
			20%	30%		

LOT 178

WXW QUEENIE Z264 F188 Group 8
#20876175 Birth Date: 1/29/23

WXW Timberline W287
WXW Streamline Z281
WXW Blackbird W15 X237
ANGUSGS WXW Timberline W287
WXW Queenie Y47 Z264
WXW Queenie 042F8 Y47

ACT. BW: 75
PAP EPD: -.95 10%
SM: SW: SC
69 64 257

CED	BW	WW	YW	SC	Heifer Preg.	CEM	Milk	Dam Age
+13	+7	+68	+112	+1.53	+12.9	+16	+22	4
10%		35%		15%		1%		% RANK

CW	MB	RE	Fat	\$F	\$G	\$B
+48	+4.2	+1.22	-.052	+91	+54	+145
			2%	2%		

REGISTERED OPEN YEARLING HEIFERS CONTINUED

LOT 179 **WXW SCHURR GIRL A082 F088** Group 9
 #20876174 Birth Date: 1/7/23
 Connealy Regulator
 WXW Timberline W287
 WXX Miss Wix Lass 063A8 N14
 ANGUSGS Connealy Dry Valley
 WXW Schurr Girl V301 A082
 WXX Schurr Girl P11 V301

CED	BW	WW	YW	SC	Heifer Preg.	CEM	Milk	Dam Age
+11	+1	+63	+113	+69	+14.6	+11	+19	4
15%	25%				25%	25%		% RANK
CW	MB	RE	Fat	\$F	\$G	\$B		
+52	+1.00	+7.2	-.013	+103	+74	+176		
	25%		20%	20%	20%	20%		

LOT 180 **WXW QUEENIE Y280 F255** Group 9
 #20848818 Birth Date: 2/16/23
 WXW Timberline W287
 WXW High Line A636
 WXX Queenie R219 X228
 ANGUSGS WXW Timberline W287
 WXW Queenie R219 Y280
 WXX Queenie N29 R219

CED	BW	WW	YW	SC	Heifer Preg.	CEM	Milk	Dam Age
+12	+0	+62	+106	+99	+11.6	+10	+14	5
10%	25%				35%			% RANK
CW	MB	RE	Fat	\$F	\$G	\$B		
+32	+8.5	+1.10	-.038	+73	+73	+146		
	10%		5%	20%				

LOT 181 **WXW SCHURR GIRL R145 F288** Group 9
 #20848825 Birth Date: 3/13/23
 MGR Treasure
 WXW Treasure Z420
 WXX Zara Lass 013 P87
 ANGUSGS WXW Connealy Onward 30-6 J1E
 WXW Schurr Girl 0325 R145
 WXX Schurr Girl 325 L33

CED	BW	WW	YW	SC	Heifer Preg.	CEM	Milk	Dam Age
+14	-.4	+44	+75	+95	+13.4	+14	+24	10
4%	20%				35%	5%		% RANK
CW	MB	RE	Fat	\$F	\$G	\$B		
+10	+6.2	-.15	+0.26	+44	+40	+84		

LOT 182 **WXW ZARA LASS A002 C606** Group 9
 #20867811 Birth Date: 12/27/22
 SydGen Blueprint
 S Architect 9501
 S Blossom 7514
 ANGUSGS WXW Timberline W287
 WXW Zara Lass V24 A002
 WXX Zara Lass N48 V24

CED	BW	WW	YW	SC	Heifer Preg.	CEM	Milk	Dam Age
+15	-3.1	+53	+95	+1.18	+15.4	+12	+32	4
2%	1%			30%	15%	15%	15%	% RANK
CW	MB	RE	Fat	\$F	\$G	\$B		
+34	+6.9	+5.3	+0.27	+73	+55	+125		

LOT 183 **WXW VELVET K94 C581** Group 10
 #20866794 Birth Date: 12/24/22
 Vermilion Spur E119
 Heiken Broadview
 JCH BHA Karen 7815
 ANGUSGS Gardens Prime Star
 WXW Velvet 136 K94
 WXX Velvet 132 G41

CED	BW	WW	YW	SC	Heifer Preg.	CEM	Milk	Dam Age
+8	+6	+65	+123	+2.07	+21.9	+7	+25	15
35%	35%		30%	2%	1%			% RANK
CW	MB	RE	Fat	\$F	\$G	\$B		
+57	+7.0	+6.5	+0.38	+107	+55	+160		
	35%			15%		30%		

LOT 184 **WXW BLACKBIRD A153 F306** Group 10
 #20870761 Birth Date: 3/27/23
 Basin Payweight 1682
 WXW Brinks V282
 WXX Queenie 142D8 P91
 ANGUSGS WXW Payweight 1611 V276
 WXW Blackbird M4 A153
 WXX Blackbird 223 M4

CED	BW	WW	YW	SC	Heifer Preg.	CEM	Milk	Dam Age
+1	+1.6	+58	+111	+1.04	+13.8	+4	+20	4
					30%			% RANK
CW	MB	RE	Fat	\$F	\$G	\$B		
+44	+8.2	+3.5	+0.33	+93	+56	+149		

LOT 185 **WXW SAMANTHA Y408 F315** Group 10
 #20848830 Birth Date: 4/27/23
 Connealy Equity
 WXW Equity A573
 WXX Blackbird P104 Y25
 ANGUSGS WXW Connealy National 390C
 WXW Samantha P67 Y408
 WXX Samantha 0445 P67

CED	BW	WW	YW	SC	Heifer Preg.	CEM	Milk	Dam Age
+9	+8	+65	+104	+6.64	+13.2	+8	+40	5
30%					35%	1%		% RANK
CW	MB	RE	Fat	\$F	\$G	\$B		
+40	+9.6	+6.9	+0.10	+72	+70	+142		
	30%				20%			

Commercial Yearling Heifers

GROUP 1

GROUP 2

- C636 (Timberline)
- F402 (Timberline)
- F066 (Landmark)
- F251
- F191

- F169
- F238
- F309
- F285
- F302
- F271

COMMERCIAL BRED HEIFERS

These High Altitude Commercial Bred Heifers come straight out of the heart of our commercial herd. The steer mates to these heifers went on to grade 100% choice or better with **44% Certified Angus Beef and 54% Prime this past year**. They were summered up until November in Walden, CO at 9,000+ feet. The heifers were A.I. bred on June 13th to WXW Timberline W287 who has proven to be an exceptional heifer bull, and then cleaned-up with a Timberline, Treasure, and Rangefinder bull. They have been given scour guard, stomach magnet, and Clean Up pour on prior to the sale. They will be sold in groups of 5, where the winning bidder must take the entire group, but has the option to take ANY GROUPS(S) they choose.

GROUP 1

Tag	Mo. Preg.	Group Avg. WT
2003	7	1082
2058	7	
2093	7	
2069	7	
2051	7	

GROUP 6

Tag	Mo. Preg.	Group Avg. WT
2096	6.5	1090
2016	6.5	
2041	6.5	
2004	6.5	
2006	6.5	

GROUP 2

Tag	Mo. Preg.	Group Avg. WT
2034	7	1063
2031	7	
2065	7	
2087	7	
2019	7	

GROUP 7

Tag	Mo. Preg.	Group Avg. WT
2039	6	1109
2098	6	
2010	6	
2072	6	
2263	6	

GROUP 3

Tag	Mo. Preg.	Group Avg. WT
2008	7	1033
2015	7	
2049	7	
2076	7	
2089	7	

GROUP 8

Tag	Mo. Preg.	Group Avg. WT
2020	6	1055
2018	6	
2119	6	
2068	6	
2025	6	

GROUP 4

Tag	Mo. Preg.	Group Avg. WT
2088	7	1010
2255	7	
2040	7	
2084	7	
2075	7	

GROUP 9

Tag	Mo. Preg.	Group Avg. WT
2052	6	1040
2078	6	
2028	6	
2046	6	
2044	6	

GROUP 5

Tag	Mo. Preg.	Group Avg. WT
2021	7	955
2045	7	
2057	7	
2032	7	
2036	7	

GROUP 10

Tag	Mo. Preg.	Group Avg. WT
2011	6	994
2047	6	
2030	6	
2101	6	
2077	6	